

## XM66: How to Update the ROM


The following guidelines provide step by step instruction for updating the ROM on Janam XM66 devices. After checking your current ROM and downloading the latest ROM, there are two options for installing the ROM. The first is using a cradle kit or cable connection to a PC, the second is using a microSD card and user accessible microSD card slot.

### Before starting:

#### ❗ IMPORTANT NOTE!

**All applications and data will be DELETED, so make sure that you are properly backed up before starting this process.**

### To check your current ROM version:

1. Tap the  icon > settings.
2. Select 'System' on the bottom menu bar.
3. Tap the XM66 panel icon (use scroll down to locate icon).
4. Scroll to the right and select 'Info' on the bottom menu bar.
  - The second line of information indicates the build version and the release date.
  - Note: The scanner ID info shows the unique scanner ID on each XM66 device. This number will be requested if you purchase the 2D unlock code.

### Download the latest ROM:

1. To download the latest ROM login to *Janam PartnerZone*. (You will need a login name and password.)
2. Accept the terms and conditions, and go to PartnerZone.
3. Go to the ROMs tab on the XM Series tab.
4. Find the XM66 ROM and click the arrow at right to begin download. Remember to store the ROM in an easily accessible location (like your desktop). You will need this file for the next step.



#### ❗ IMPORTANT NOTE!

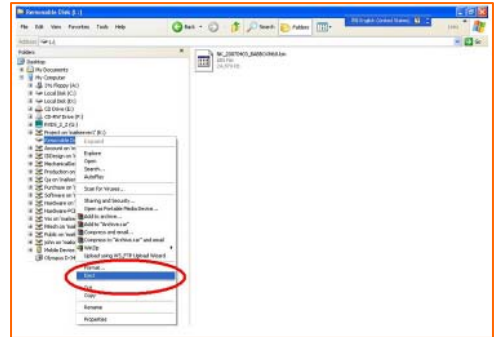
**Make sure that you use the correct BIN file for each model.  
The incorrect BIN file will cause the system to fail to boot.**

**See next page for Option A: Install the Latest ROM Using Cradle Kit or Cable Connection to PC**

## Option A:

### Install the Latest ROM Using Cradle Kit or Cable Connection to PC:

1. Make sure the handheld's battery is fully charged.
2. Remove the battery door from the handheld.
3. Press the reset button with stylus while holding the right trigger button until 'USB' appears on the display.
4. Place the XM66 in cradle (or use UC-XP-1) and connect USB cable to your PC.
5. A removable drive will appear on PC monitor.
6. Copy the downloaded BIN file from your PC to the removable drive.
7. Move up one level in the explorer directory hierarchy.
8. Highlight the removable drive, right click and select 'Eject'.



9. Wait for the XM66 to display 'Update Success'.
10. Replace battery cover and the device will boot to factory defaults.

### ❗ IMPORTANT NOTE — BATTERY DOOR!

*XM66 mobile computers feature a **battery door removal detection switch**. This is designed to protect against data loss if the battery is removed during data collection or processing. The system will not fully operate when the battery cover is removed. As a result of this feature, XM66 devices automatically create a safe state until the battery cover is secured, meaning a device will power-down until the battery door is closed. It will then recall and resume from the user's most recent screen when the battery door is fully in place.*

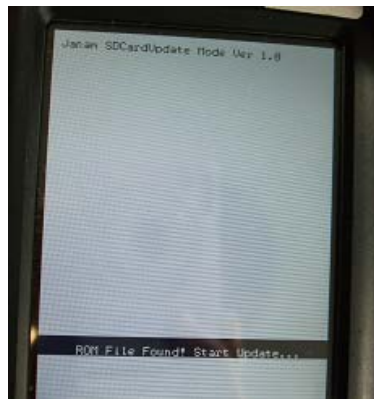
**See next page for Option B: Install the Latest ROM Using a microSD Card**

**Option B:****Install the Latest ROM Using microSD Card**

1. Rename your ROM file as XM66F.bin and save it to the root of your microSD card.
2. Insert the microSD card in the user-accessible card slot.
3. Hold the "Left" arrow button and press "Reset"



4. The device will enter "SD-Card Update Mode"



5. If the ROM is on the card there will be no further user input required.
6. Wait for the XM66 to display "Update Successful", then hard reset.